



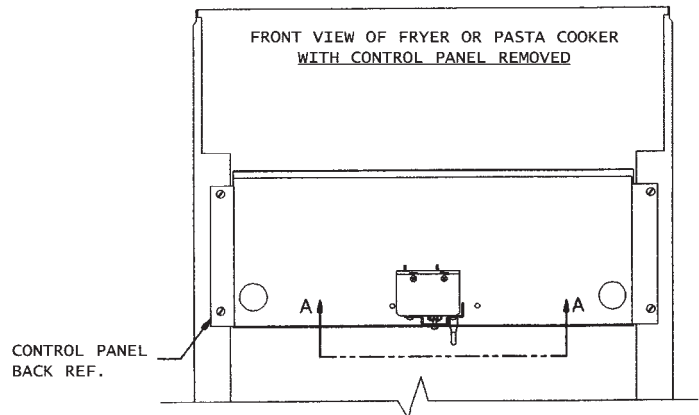
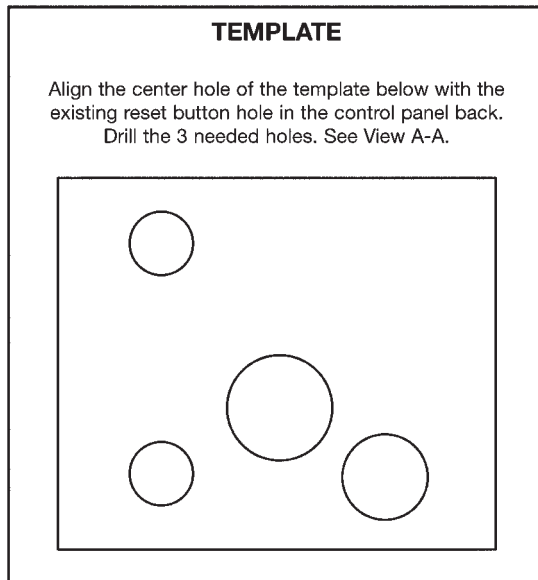
SERVICE INSTRUCTIONS

1-800-KEATING • keatingofchicago.com

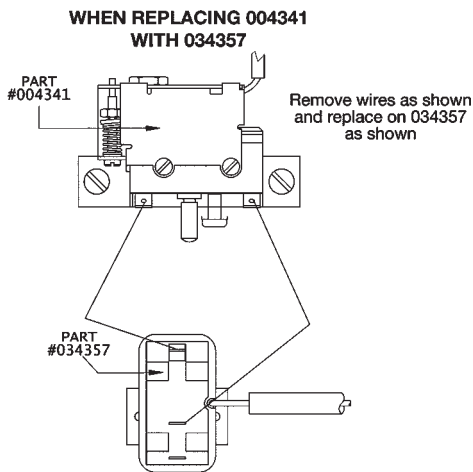
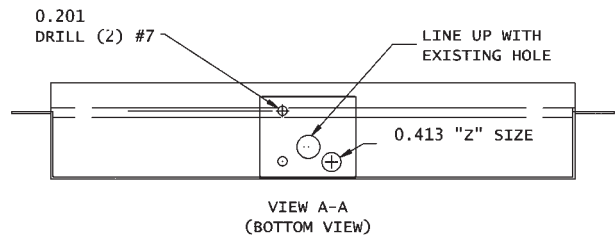
MOUNTING INSTRUCTIONS FOR REPLACING HI-LIMIT CONTROL #004341 (BACK MOUNT) WITH #034357 (BOTTOM MOUNT)

FOR IFM & GAS FRYERS & PASTA COOKERS

1. Line up template with reset button clearance hole in bottom of control panel back. Hold in place & mark hole centers.
2. Drill (2) $\varnothing 0.201$ (#7) holes.
3. Drill (1) 0.413 hole.
4. Install new Hi-Limit control using (2) #8-32 x 1/4" screws (part #017744).



LINE UP TEMPLATE ON EXISTING HOLE AS SHOWN. DRILL (2) .201 #7 HOLES AND (1) .413 "Z"



HI-LIMIT RESET BUTTON

If the Hi-limit has been activated, press the red button to reset after the oil cools.

The red button is located under the control panel.



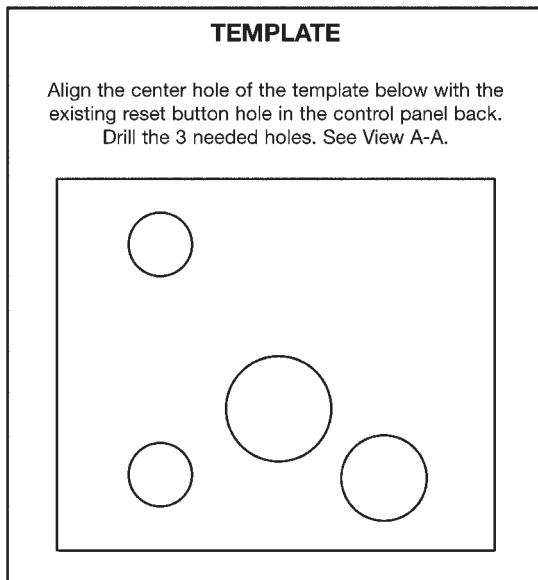
SERVICE INSTRUCTIONS

1-800-KEATING • keatingofchicago.com

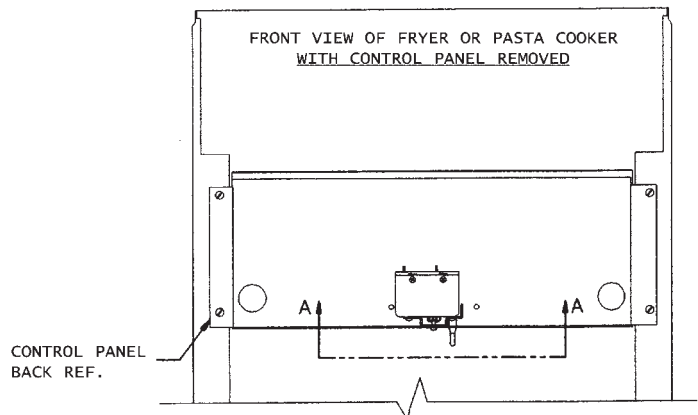
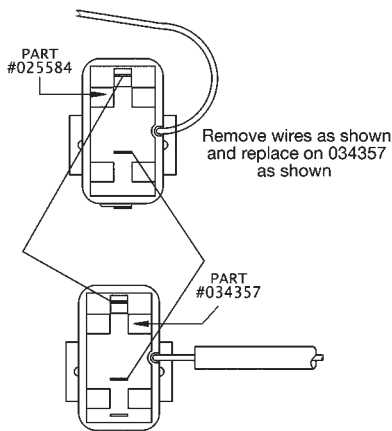
MOUNTING INSTRUCTIONS FOR REPLACING HI-LIMIT CONTROL #025584 (BACK MOUNT) WITH #034357 (BOTTOM MOUNT)

FOR IFM & GAS FRYERS & PASTA COOKERS

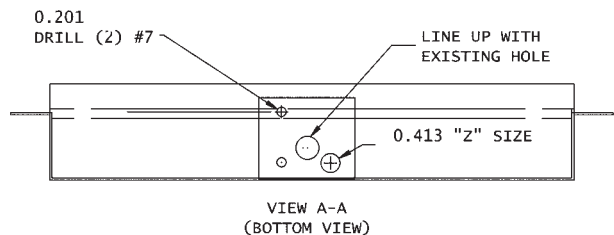
1. Line up template with reset button clearance hole in bottom of control panel back. Hold in place & mark hole centers.
2. Drill (2) $\varnothing 0.201$ (#7) holes.
3. Drill (1) 0.413 hole.
4. Install new Hi-Limit control using (2) #8-32 x 1/4" screws (part #017744).



WHEN REPLACING 025584 WITH 034357



LINE UP TEMPLATE ON EXISTING HOLE AS SHOWN. DRILL (2) .201 #7 HOLES AND (1) .413 "Z"



HI-LIMIT RESET BUTTON

If the Hi-limit has been activated, press the red button to reset after the oil cools.

The red button is located under the control panel.